



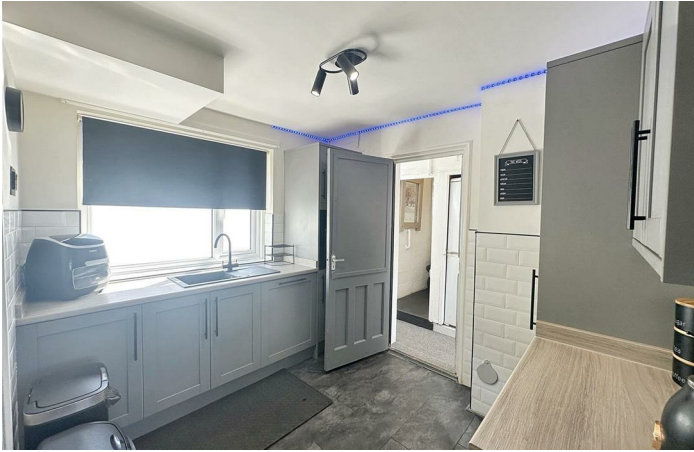
## Harbour View Road , Portland DT5 1EP

- Non Standard Construction
  - Three Bedrooms
  - Contemporary Kitchen
- Gas Central Heating & Double Glazing
- Close Proximity to Local Shops & Amenities in Fortuneswell
- Beautifully Presented Throughout
  - Lounge & Dining Areas
- Family Bathroom, Ground Floor Shower Room & Ground Floor WC
- Low Maintenance Gardens to the Front & Rear
- Wonderful Sea Views

**Offers In Excess Of £215,000 Freehold**







## Location

### GROUND FLOOR

Entrance Porch

Entrance Hallway

Lounge

10'6" x 13'3"

Dining Room

9'10" x 9'11"

Kitchen

Side Hallway

Shower Room

4'9" x 8'11"

WC

### FIRST FLOOR

First Floor Landing

Bedroom One

Bedroom Two

8'5" x 11'5"

Bedroom Three

7'6" x 8'8"

Bathroom

5'3" x 6'4"

### OUTSIDE

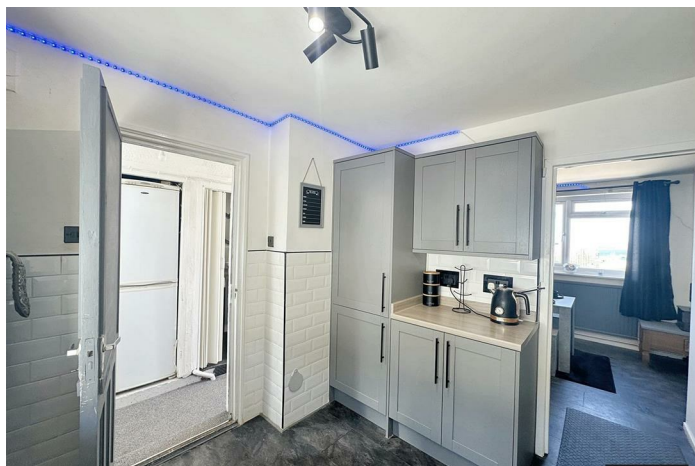
Front Garden

Rear Garden

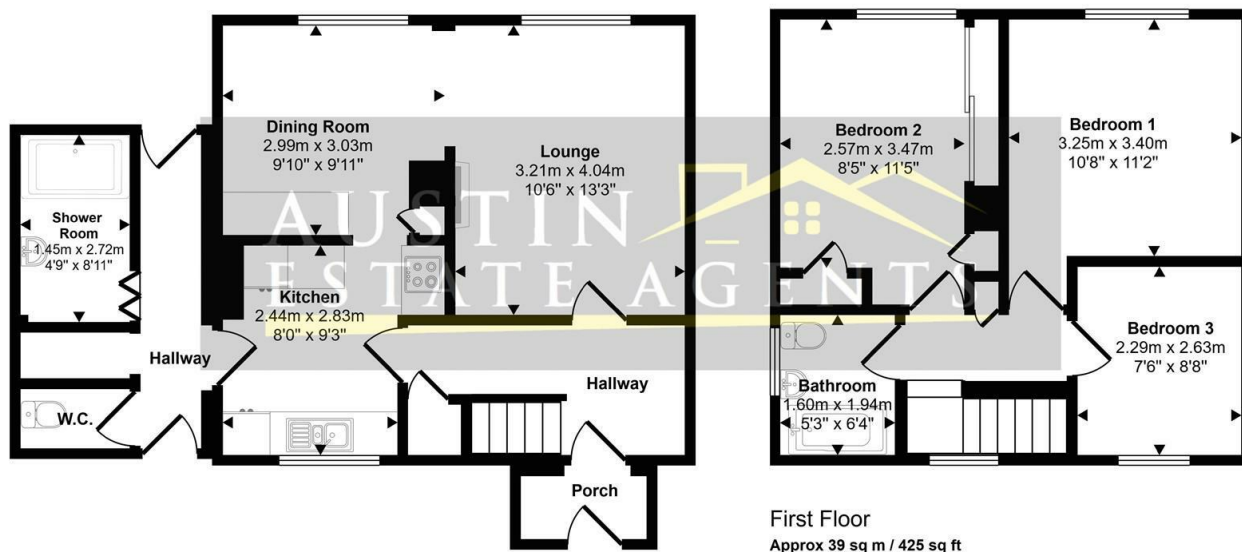




Local Authority  
Council Tax Band A  
EPC Rating D



Approx Gross Internal Area  
92 sq m / 991 sq ft



First Floor  
Approx 39 sq m / 425 sq ft

Ground Floor  
Approx 53 sq m / 566 sq ft

This floorplan is only for illustrative purposes and is not to scale. Measurements of rooms, doors, windows, and any items are approximate and no responsibility is taken for any error, omission or mis-statement. Icons of items such as bathroom suites are representations only and may not look like the real items. Made with Made Snappy 360.

#### Weymouth Office

115 Dorchester Road, Weymouth,  
Dorset, DT4 7JY

#### Contact

01305 858470  
[info@austinpropertyservices.co.uk](mailto:info@austinpropertyservices.co.uk)  
[austinpropertyservices.co.uk](http://austinpropertyservices.co.uk)

Agents Note: Whilst every care has been taken to prepare these particulars, they are for guidance purposes only. All measurements are approximate and for general guidance purposes only and whilst every care has been taken to ensure accuracy, they should not be relied upon and potential buyers/tenants are advised to recheck the measurements.